

**FAG**



**FAG PowerTherm  
HEATER  
HEATER.PLATE**

**Bench top devices for heating  
rotationally symmetric parts**

A Member of the  
Schaeffler Group

# FAG PowerTherm HEATER

## Correct mounting helps prevent damage over time

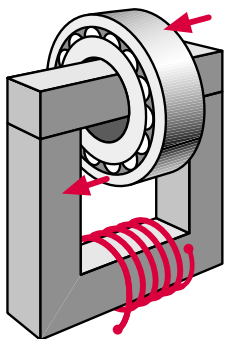


### Heating?

Many rolling bearings and other rotationally symmetric steel parts are fitted tightly on the shaft. Larger parts, in particular, can be fitted more easily if they are heated first (rolling bearings up to a maximum of 248 °F).

### Induction heating?

Induction heating is superior to the traditional methods – fast, clean – ideal for batch mounting. Complete bearings, rings of cylindrical roller bearings or needle roller bearings as well as other rotationally symmetric steel parts like labyrinth rings, roll couplings, tires, etc. can be heated.



### Function

The heart of the induction HEATER is a current-carrying coil with an iron core (primary coil), that generates a high induction current at a low voltage in a short-circuited

secondary circuit (rolling bearings, other steel components). The part to be mounted is heated quickly; non-metallic parts and the device itself remain cool.

### FAG PowerTherm HEATERS

- heat parts uniformly and prevent harmful temperature differences
- work faster and cleaner than traditional heating methods
- heat parts (micro processor controlled) to the previously selected temperature
- demagnetize rolling bearing steels automatically

### HEATER 10

Handy, mobile device for heating small rolling bearings or other rotationally symmetric parts. Ideal for maintenance work in cars and in electrical machines.

- parts of up to 22 lbs
- bore diameters from 0.5" onward
- easy operation
- weighs only 15.4 lbs
- convenient carrying case for mobile use



### Advantages

- energy efficient, clean and environmentally sensitive (no oil, and consequently no disposal cost)
- very cost effective
- work pieces are positioned horizontally, reducing cycle time up to 50% due to higher efficiency\*
- shorter mounting times
- simpler operation
- demagnetized and stress-relieved work pieces
- high degree of flexibility as a number of different ledges can be used with the device
- no maintenance cost
- micro processor controlled
- protective gloves and magnetic feeler included in the delivery
- three-year guarantee

\* not recommended for bearings with reduced clearance, e.g. C 2.



## HEATER 20

Mobile heating device for small rotationally symmetric parts and bearings.

- parts of up to 44 lbs
- for bore diameters from 0.4" onward
- easy operation
- weighs only 37.4 lbs
- Bench top device with a sturdy, handy protective transport cover



**HEATER:**  
Uniform,  
stress-relieved  
induction heating



## HEATER 150

Stationary heating device with a slewing ledge. Work pieces can be positioned vertically or horizontally.

- parts of up to 330 lbs
- bore diameters from 0.8" onward
- slewing ledge makes it easier to mount the parts on the heater
- horizontally positioned work pieces save time
- 400 Volt technology



## HEATER 35

For professional mounting work in maintenance workshops and in the production sector. The slewing ledge makes the device easier to operate and simplifies mounting & dismantling of the work piece.

- parts of up to 77 lbs
- bore diameters from 0.6" onward
- stationary use

**HEATER:**  
**Fast,**  
**safe**  
**induction heating**

## HEATER 300

Bench top device for heating very heavy work pieces in horizontal or vertical position. A separate cart with a tray for keeping ledges is available for moving the heating device to different places.

- parts of up to 660 lbs
- bore diameters from 1.2" onward
- slewing ledge: work pieces can be mounted more easily in less time
- 400 Volt technology





# FAG PowerTherm HEATER

## Technical data



PowerTherm	HEATER 10	HEATER 20	HEATER 35	HEATER 150	HEATER 300
Power consumption max. [kVA]	2.2	3.5	3.5	12.8	12.8
Voltage / frequency*	115/60	115/60	115/60	440/60	440/60
Current [A]	10	16	16	32	32
Temperature display [°F]	122... 464	122... 464	122... 464	122... 464	122... 464
Mass [lbs]	15.4	37.4	68.2	112.2	279.4
Length [inch]	9.1	13.6	16.5	19.9	27.6
Width [inch]	7.9	7.9	10.2	10.2	19.7
Height [inch]	9.5	9.5	14.2	17.3	22.8
Ledge(s) W x H x L incl. in the delivery [inch]	0.6 x 0.6 x 1.0 1.2 x 1.2 x 1.0 1.8 x 1.6 x 1.8	0.6 x 0.6 x 7.9 1.0 x 1.0 x 7.9 1.6 x 1.6 x 7.9	2.0 x 2.0 x 11.0	2.8 x 2.8 x 13.8	3.1 x 3.1 x 19.3
 clear width w [inch] clear height h [inch]	2.6	4.7	7.1	8.3	15.4
	4.7	3.9	6.3	8.5	11.8
Work piece mass max. [lbs]	22	44	74	330 (horizontal only)	660 (horizontal only)
Ledge(s) (acc.) W x H x L [inch]	0.3 x 0.3 x 4.1 0.4 x 0.4 x 4.1	0.3 x 0.3 x 7.9 0.4 x 0.4 x 7.9 1.2 x 1.2 x 7.9	0.4 x 0.4 x 11 0.6 x 0.6 x 11 1.0 x 1.0 x 11 1.2 x 1.2 x 11 1.6 x 1.6 x 11	0.6 x 0.6 x 13.8 0.8 x 0.8 x 13.8 1.2 x 1.2 x 13.8 1.6 x 1.6 x 13.8 2.0 x 2.0 x 13.8 2.4 x 2.4 x 13.8	0.8 x 0.8 x 19.3 1.2 x 1.2 x 19.3 1.6 x 1.6 x 19.3 2.0 x 2.0 x 19.3 2.4 x 2.4 x 19.3 2.8 x 2.8 x 19.3

\* other voltages/frequencies on request

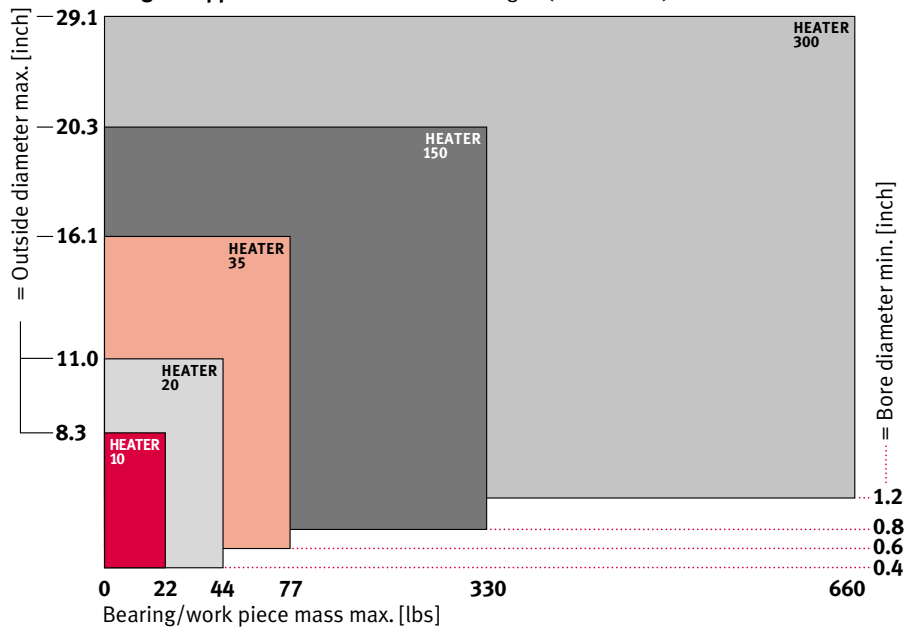
⊙ = work piece bore min. [inch]

The right heating device for each application!

Five Bench top induction heating devices, for mobile and/or stationary use, make it easier to mount work pieces weighing up to 660 lbs. FAG will assist you in integrating the devices into your production process. Extremely powerful stationary devices are available for work pieces weighing < 660 to 6,600 lbs.

We will be happy to make you an offer for your specific applications!

Range of application of HEATERS with ledges (accessories)



# FAG PowerTherm HEATER.PLATE The Alternative

## HEATER.PLATE

Favorably priced electric heating plate for heating small rolling bearings and small machine elements (e.g. sealing rings).

- uniform, clean heating under protective cover
- no maintenance required
- continuous temperature adjustment between 122 and 392 °F
- easy operation
- suitable for rolling bearings as well as labyrinth rings, shrink-on rings and sealing rings



### Advantages

- low acquisition cost
- no maintenance required
- clean, environmentally sensitive heating (no oil, and consequently no disposal cost)
- easy and safe operation

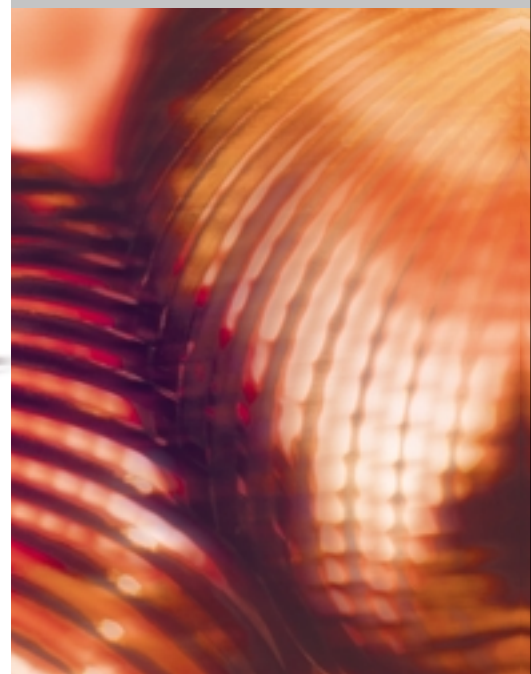
The FAG PowerTherm HEATERS makes your mounting work easier and prevent damage!

### Technical data

#### HEATER.PLATE

Power consumption (max.)	1,500 W
Voltage / frequency	115 V / 60 Hz*
Heating range	122...392 °F
Heating precision	< 50 °F
Plate dimensions (L x W)	14.90 x 7.09"
Protective cover height	2.36"
Dimensions (L x W x H)	15.35 x 10.63 x 6.14"
Mass	12.4 lbs
Length of the connecting cable	7.2 feet
Work piece mass	max. 11.0 lbs

\* also available for 220...240 V and 50 Hz



### FAG Kugelfischer AG

Georg-Schäfer-Straße 30  
97421 Schweinfurt  
Germany

Tel: +49-(0) 2407 91 49 99

Fax: +49-(0) 2407 91 49 59

E-Mail: [support@fis-services.de](mailto:support@fis-services.de)  
[www.fis-services.de](http://www.fis-services.de)

Every care has been taken to ensure the correctness of the information contained in this publication but no liability can be accepted for any errors or omissions. We reserve the right to make changes in the interest of technical progress.

© by FAG 2003

This publication or parts thereof may not be reproduced without our permission.

WL 80 343/1 EC/ED